

History of Lambrecht Cemetery Association of Pierce County, Nebraska

1984-2020

Providing sufficient revenue for payment of costs for maintaining a cemetery has always been an issue for the Lambrecht Cemetery Association, and its predecessor in name. As the word “association” in its title indicates, it is a group of people associating together for a common purpose, i.e., a burial ground for the deceased former members of that group and their minor children. A cemetery association is an entity created by applicable statutes of the State of Nebraska. In 1883, when the Pleasant View Cemetery Association was formed in the home of August and Louise Lambrecht, the cemetery association statutes were codified in Chapter 11 of the Nebraska statutes. Today, those same statutes are located in Chapter 12 of the Nebraska statutes. Those statutes proscribe, among other items, the method of raising funds for the general maintenance and capital improvements of the cemetery grounds through the sale of burial spaces and monetary assessments of the members of the association. Obviously, monetary donations and free labor on behalf of the Cemetery Association are always welcome. The assessment process is straightforward. Essentially, if you own a burial space in the cemetery, the cemetery association should levy an annual assessment upon that burial space for the general upkeep of the cemetery. If the assessment is not paid for a period of three years, the cemetery association has the statutory authority to reclaim the burial space and resell it to another person. Review the treasurer’s ledger book for 1939. Note the \$1.00 payments and the \$2.00 payment for two Lots. Those were payments of the annual assessments for the prior fiscal year of the Lambrecht Cemetery Association. Twelve families were providing financial support for the maintenance of the Lambrecht

Income Receipts		Expenditures			
May 21, 1939					
By Mrs. Frank Lambrecht					
May 21	Anna Beader Washburn	1.00	May 21	Mr. Kuhl moving casket	5.00
	Anna Smith	1.00	May 11-12	Richard Kuhl moving	
	Emma Lambrecht	1.00		and cleaning cemetery	5.00
	Oliver Lambrecht	1.00			10.00
	Wm. Hansen	1.00			
	Francis W. Sells	1.00			
	Mrs. E. E. Walton (2 lots)	2.00			
	Mr. Kuhl	1.00			
	21 Frank Eschbiger	1.00			
	27 Richard Voska	1.00			
	July 2 Mrs. Bernadette	1.00			
	Martha Steinkamp	1.00			
	1939 Balance	1.00			
		12.00			
		14.00			
	Expenditures	14.00			
	1940 Balance	0.00			

Cemetery. As these family members died or they moved on to another location, the members paying assessments declined and so did the financial health of the Lambrecht Cemetery.

The same state statutes provide for there to be an annual meeting of the members of a cemetery association. There exists a secretary's book for the Lambrecht Cemetery Association for the annual meetings of the Association

members beginning in 1946 to the present year. We know that the original secretary's book was lost in a fire at the Homer Birch farmstead. We also know that the minutes of the early meetings of the Association were typed and recorded with the Pierce County Register of Deeds in 1938 when the members of the Association changed the name of the Association to the Lambrecht Cemetery Association.

The secretary's book beginning in 1946 to 2020 for the Lambrecht Cemetery Association has been copied and is on this website under the History tab. The original has been donated to the Pierce County Historical Society. Reading the minutes of those meetings is to gain an insight into the care and maintenance that the members over the years have placed into the cemetery

and also an insight into the many financial struggles of the members on behalf of the Cemetery Association. An example is the minutes of the 1953 annual meeting.

Minutes of the 1953 Annual Meeting
 The meeting was called to order at 7:30 P.M. by the President, Mrs. J. H. Lambrecht. The minutes of the previous meeting were read and approved. The Treasurer, Mrs. J. H. Lambrecht, reported that the association had a balance of \$10.00. The Secretary, Mrs. J. H. Lambrecht, reported that the association had a balance of \$10.00. The meeting adjourned at 9:00 P.M.

Minutes of the 1953 Annual Meeting
 The meeting was called to order at 7:30 P.M. by the President, Mrs. J. H. Lambrecht. The minutes of the previous meeting were read and approved. The Treasurer, Mrs. J. H. Lambrecht, reported that the association had a balance of \$10.00. The Secretary, Mrs. J. H. Lambrecht, reported that the association had a balance of \$10.00. The meeting adjourned at 9:00 P.M.

Minutes of the 1953 Annual Meeting
 The meeting was called to order at 7:30 P.M. by the President, Mrs. J. H. Lambrecht. The minutes of the previous meeting were read and approved. The Treasurer, Mrs. J. H. Lambrecht, reported that the association had a balance of \$10.00. The Secretary, Mrs. J. H. Lambrecht, reported that the association had a balance of \$10.00. The meeting adjourned at 9:00 P.M.

These annual meetings were usually held on the Sunday before Memorial Day, which before 1971 was May 30th of each year. They were first held in School District No. 22's schoolhouse which was known locally

as the Tawney school. This schoolhouse was located just a quarter mile or less northwest of the Lambrecht Cemetery. These minutes of the 1953 annual meeting reflect that the annual assessment was to be \$5.00 for each Lot owner. Remember, a Lot consisted of eight burial spaces. The annual meetings continued to be held at the Tawney schoolhouse until that school district dissolved. The meetings were then held in the Birch school located a mile or so east of the Lambrecht Cemetery until it no longer was a public school at which time the meetings were held in the private homes of members of the Cemetery Association or at the Lambrecht Cemetery itself, and more recently, at the United Church of Christ church in Pierce, Nebraska.

Paying the ongoing expenses of the Cemetery Association through revenues generated by the sale of Lots and assessments levied upon the members of the Cemetery Association left the officers of the Cemetery Association struggling to pay for the general maintenance of the cemetery, the main expense being the periodic mowing of the grasses and other vegetation growing in the cemetery. Ideally, the annual assessments upon the members of the Cemetery Association should have covered and paid for the annual expenses of maintaining the cemetery. However, it is evident that not all assessments were paid. Considering the relationships and the friendships among the members of the Cemetery Association, no attempt was made by the officers of the Cemetery Association to collect those unpaid assessments or to start the reclaiming process of the Cemetery Lots owned by the non-paying members. Was there a better method of raising money for the Cemetery Association?

The treasurer's ledger book from 1923 to 1990 for the Lambrecht Cemetery Association has been copied and is on this website under the History tab. The original has also been donated to the Pierce County Historical Society. The last entry in it for collection of assessments is in the year 1955. Why were there no assessments paid after that year? The answer is in the secretary's book. At the 1954 annual meeting of the members of the Cemetery Association, it was proposed by Herbert Voecks, a grandson of August and Louise Lambrecht and the eventual donor, with his wife, Leona, of the entrance arch to the Lambrecht Cemetery, that a perpetual care fund be created for the Cemetery Association. No action was taken. However, at the 1955 annual meeting, it was agreed that a perpetual care fund be created by each Lot owner contributing \$100.00 for a total of \$2500.00 and the money be invested in United Fund Cooperative, the

dividends of which would be paid four times per year to the Cemetery Association and used to pay the ongoing annual expenses of the Cemetery Association. In the

May 29, 1955

We had a pleasant day for the annual Memorial Day service at the Lambrecht Cemetery.

Resolutions were made to order by the Cemetery Association. The minutes of the last meeting were read by the secretary. The association was made in the cemetery having to do with the cemetery reports of the 1954-55. The minutes of the 1954-55 were read and the minutes were accepted.

The treasurer reported a balance of \$1368.31. The report was accepted.

A motion was made and seconded that \$100.00 be allowed to the Cemetery for the year.

A motion was made and seconded that \$15.00 per year be allowed in the future.

The year is to be refused from the money, but not

finding anyone else approved to sign it for the balance of this year.

A motion was made and seconded that a year fence be put around the Cemetery. The fence was to consist of a fence built with concrete blocks and an ornamental fence & gate on the east side.

A committee consisting of John Taylor, Albert D. Jones and Harry D. Jones was appointed by the association to see that the fence was put in.

The idea of the Perpetual Care Fund was explained by Herbert Voeks. It was stated that the money could be put into a bank or into a corporation.

The United Fund (Cooperative) was mentioned as \$5.00 and the dividends

would be paid four times a year.

The motion was made and seconded that we try to collect \$250.00 for the Perpetual Care Fund which \$100.00 of the \$250.00 would be paid for the annual needs for the year.

The motion was made and seconded that the meeting be adjourned.

Miss Arnold was secretary.

Mrs. Art Johnson gave a talk that we all enjoyed. The resolutions were adopted by Mrs. Arnold, Mrs. and Mrs. Betty Cox. Mrs. Grayling was enjoyed by all.

minutes of the 1957 annual meeting, it was reported that the \$1600.00 invested in the United Fund had grown to \$1995.77.

Does this imply that sixteen families had contributed \$100.00 per family to the perpetual care fund and nine families of the initial twenty-five families had not contributed? Presumably so. Through investments, sale of burial spaces, and monetary donations to the Cemetery Association by its members, the Cemetery Association, since 1955, has been able to pay its annual expenses without levying an annual assessment upon its members. When available funds have been scarce, the officers of the Cemetery Association have requested those interested

1996

Lambrecht Cemetery Assoc met on May 30 at the home of John & Betty Lawrence with 10 present. We will read an article about all cemeteries.

Pat Betty Lawrence presented. Minutes read & approved. Treasurer report - Savings Acct. - \$985.00 - CD - closed at \$256.90 - Balance in checking - \$884.97. She reported that the letter she sent out to obtain donations did help a lot. She passed out a list of the donors.

A letter was read from Lester stating he wants the job of mowing to himself. He wants to help him. It was then agreed he could keep the job as long as he does a good job and looks real good for Memorial Day. If he needs help he should let us know. He seemed happy with the agreement.

Wenell has lined up help to trim trees and Clarence has donated a steel post for replacement.

Those present: Marge & Alf, Mrs. A. Lawrence, Mrs. Betty Lawrence, Mrs. Jack Price, Betty Kohl, Gertrude, Lester Synovec, Shirley Hoffman.

Meeting adj. Shirley Hoffman Sec.

in the Lambrecht Cemetery to make voluntary donations to the Cemetery Association. It was reported in the 1996 minutes of the annual meeting that Winell (Buss) Suckstorf, as Treasurer, had sent a letter to numerous families and individuals requesting a monetary donation of them to the Lambrecht Cemetery to pay the expenses of its maintenance. She reported that the responses and donations had helped the Lambrecht Cemetery's cash flow.

List of contributors to the Lambrecht cemetery for operating expense for the year 1995:

- Mary and Leota Pittack.....Norfolk, NE
 - Lloyd and Erma Kuhl.....Council Bluffs, IA
 - Beth (Kuhl) Petersen.....Marysville, Kansas
 - Clarence and Winell Suckstorf.....Pierce, NE
 - Jack and Norma Donough.....Moriah, IA
 - Gerhart Kuhl.....Plainview, NE
 - Alyce Spiederler (Houzu).....Pierce, NE
 - Joann Voeks (Danny).....Arizona
 - Beth (Lurek) Retz.....Wausa, Ne
 - Pat Kueher (Gordon).....Pierce, NE
 - Leona Voeks (Herbert).....Grand Island, NE
 - Delilah (Buss) Johnson.....Battle Creek, NE
 - Rod and Lajoun Price.....Lincoln, NE
 - Lloyd Synovec.....North Platte, NE
 - Maxine Gutz.....Foster, NE
 - Maxine (Lambrecht) Patrick.....Seattle, Wash.
 - Mildred Peterson (Wachholz).....Plainview, NE
 - Delbert Krueger.....Pierce, Ne
 - Wilma (Krueger) Griffith.....Wheatridge, Colo.
 - Susan Viola (Krueger) Evans.....Arnold, Maryland.
 - Darlene (Krueger) Bassford....."
 - George Krueger.....Banning, Calif.
 - Fred and Helen Wachholz.....Pierce, NE
 - Dorothy (Kuhl) Lindahl.....Wausa, NE
 - Vivian (Wachholz) Cox.....Foster, NE
 - Louise (Wachholz) Bradly.....Plainview, NE
 - Rosemary Suckstorf (Martin).....Thayer, Kansas
 - Lester Synovec.....Pierce, NE
- For the year 1996:
- Maxine (Lambrecht) Patrick.....Seattle, Wash.
 - Chuck and Arlene Price.....Pierce, NE
 - FRONIE VOECKS.....PIERCE, NE

WE SAY THANK YOU VERY MUCH!!!

A list of those contributing was added to the minutes of that annual meeting.

In reviewing the minutes of the annual meetings of the members of the Cemetery Association, note the minutes of the 1983 through 1985 annual meetings and the paragraphs relative to locating unmarked/unoccupied grave sites. It is apparent in those minutes that the determination of the location of a grave site in the Lambrecht Cemetery was based upon measurements from the Pierce County Historical Society boulder/rock located at the entrance gate to the Lambrecht Cemetery. Apparently, the committee formed to propose and develop a better system of measurement did not immediately accomplish their task. However, the 1987 annual meeting minutes state that the graves in the cemetery had been marked so it will be easier to find them in the winter. What this marking system consisted of is not stated and was not foolproof. This was evident in 2016 when Winell (Buss) Suckstorf, the Lambrecht Cemetery Association Treasurer, related that in the winter of 2013, after the death of a young child, she and Shirley (Voecks) Hoffman, Secretary of the Lambrecht Cemetery Association, on a very cold, snowy, and windy day, had attempted to locate the burial space for the deceased child so that the grave could be dug. They did their best to measure and locate its location, but they ultimately discovered, well after the committal, that they had missed the mark. There had to be a better system of locating burial spaces.

In calendar year 2016, the officers of the Lambrecht Cemetery Association authorized Loren Lindahl, a great grandson of August and Louise Lambrecht, to work with the JEO Consulting Group, an engineering/surveying company, to locate the corners of the twenty-five Blocks in the cemetery. If the corners of a Block were located, then it would be a matter of measuring from one or more of those corners to find and locate the burial spaces in that Block. Once before, the corners of the Blocks had been located and marked. Referring to the 1937 article in the Pierce County Leader newspaper (History tab-History 1883-1938) regarding the Lambrecht Cemetery, it is stated that "In 1894 red cedar stakes were placed to mark lots at a cost of \$3.15." Later in the same article, it is said that "In 1910 it was voted to replace the red cedar marking stakes with bricks set one inch above the ground." The first statement implies that these red cedar marking states were set at the corners of all of the Lots, which would include the four corners of each Block. The second statement would imply that those red cedar stakes had been removed and replaced with red bricks protruding one inch above the ground. In 2013, no red bricks could be seen in the Lambrecht Cemetery. It was

apparent that they had deteriorated or been covered up with accumulating soil, or both. But what about the red cedar stakes? Had they been removed? There was no visual evidence that they existed. To answer these questions would require additional effort.

On a warm early August day in 2016, three members of JEO and Loren Lindahl met at the Lambrecht Cemetery to look for buried red cedar stakes. The three



members of JEO had brought with them various surveying tools and a sod cutting machine. Based upon their research of the measurements utilized by Mr. Bishop in his original survey of the Lambrecht Cemetery in 1883, which identified an acre 5 chains (330 feet) and 77 links (609.84 inches) east of the Northwest corner of

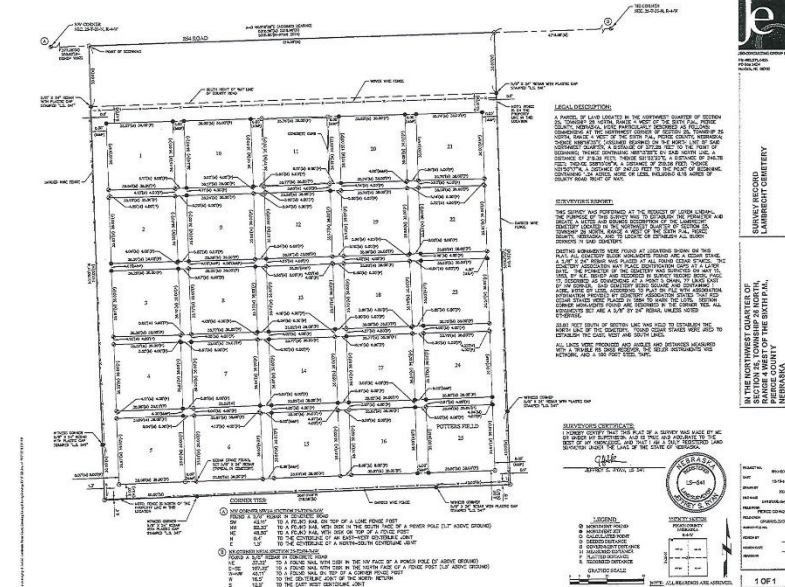
Section 25-26-4, they were able to determine where the corners of the Blocks were and by inference, where there should be buried a red cedar stake. The sod cutter was employed to remove the top layer of sod at a corner of a Block and then shovel and spade and eventually a trowel was used to dig into the ground in search of a red cedar stake. Success was instantaneous. The first red cedar stake was found hiding below the surface of the ground.



Amazingly, the GPS surveying coordinates of the location of that red cedar stake matched almost exactly the location based upon the Bishop survey and plat.

The JEO crew then moved onto the next Block corner and subsequent Block corners in search of red cedar stakes. Many were found. Some were not. Evidence of red bricks was only occasionally found. The wood red cedar stakes had survived through the years. The red bricks had not.

The next step for the JEO crew was to establish through the use of GPS the location of the corners of each Block and then to drive rebar into the ground at each Block corner location.



An outer boundary survey was also completed, and a detailed plat prepared of the Lambrecht Cemetery.

Realizing that the top of a 5/8ths inch thick rebar at ground level is not easy to locate without a metal detector, in 2017 it was determined that each rebar should contain on it a survey marker cap. On each

survey marker cap would be the number of the Block which it is marking, an arrow positioned to point to the center of the Block, and the words “Lambrecht Cemetery, Pierce County, Nebraska, 1883-2017.” Now, locating burial spaces in each Block is much easier than measuring from a rock.

Now that JEO had a current legal description for the Lambrecht Cemetery acre of burial grounds, this would be the appropriate time to revise the August and Louise deed to the cemetery by updating the legal description. The minutes of the Pleasant View Cemetery Association of October 1, 1883, reflect that a deed had been prepared, given to August and Louise Lambrecht to sign, acknowledged, and given to the President, Joseph Forsythe, to take to the Pierce County Register of Deeds for recording. However, a search of the deed records of the Pierce County Register of Deeds did not reveal that deed. For whatever cause or reason, the deed of October 1, 1883, to the Pleasant View Cemetery was never recorded with the Pierce County Register of Deeds. What to do now?



After the JEO survey, the Lambrecht Cemetery Association had a current legal description for the Lambrecht Cemetery. Obviously, August and Louise

Lambrecht had passed on and were lying in their graves in the Lambrecht Cemetery. They could not execute a deed conveying their one acre of land to the Lambrecht Cemetery Association. Fortunately, the land upon which the Lambrecht Cemetery was situated was still owned by a relative of August and Louise Lambrecht. The relative and owner was Jeff Lambrecht, a great great grandson of August and Louise, and his wife, Amy. In May of 2017, Jeff and Amy executed a deed conveying the land upon which is situated the Lambrecht Cemetery to the Lambrecht Cemetery Association of Pierce County, Nebraska. That deed was then given to the Pierce County Register of Deeds to record and index against the NW1/4 of Section 25, Township 26 North, Range 4 West of the 6th P.M., Pierce County, Nebraska. Finally, after 134 years, legal title to the burial grounds of the Lambrecht Cemetery Association was in its name and title.

Another issue facing the members of the Lambrecht Cemetery Association was Lots and burial spaces in the cemetery which appear from the Bishop plat and the Voecks plat to be owned by individuals or families who had either died and were buried elsewhere or had moved from the area of the cemetery and had no further interest in the cemetery or in being buried in it when they died. There may have been a written record of those Lots and burial spaces being returned to the Cemetery Association in the original secretary's book, but those records were destroyed in the Homer Birch house fire of 1943. Those Lots and burial spaces needed to be reclaimed by the Cemetery Association and again made available for sale.

Fortunately, the Nebraska statutes pertaining to cemetery associations do provide a mechanism for the reclaiming of unused burial spaces. However, it is based on annual assessments being levied upon the members of the cemetery association and those annual assessments being unpaid for three or more years. As noted above, the Lambrecht Cemetery Association has not been levying an annual assessment since 1955. However, another clause of the Nebraska statutes relative to cemetery associations states that if there has been no burial in a burial space for twenty years and no assessment paid in that time, then the cemetery association may begin the process of reclaiming those burial spaces. Obviously, in 2018, those burial spaces on the Bishop and Voecks plats which indicated owners who were no longer in the area or who had died, more than twenty years had elapsed, and no assessments had been paid in that time period. (Of course, no assessments had been levied in that time either)

Accordingly, at the 2018 annual meeting of the members of the Lambrecht Cemetery Association, it was determined to proceed to reclaim those “spoken for” but “unused” burial spaces. This was accomplished through publications of several legal notices in the area newspapers to the alleged owners of those Lots and burial spaces. At the 2019 annual meeting of the Lambrecht Cemetery Association, the members adopted a Resolution declaring those

LAMBRECHT CEMETERY ASSOCIATION
OF PIERCE COUNTY, NEBRASKA

RESOLUTION 2019 - 1

WHEREAS, the Board of Trustees of Lambrecht Cemetery Association of Pierce County, Nebraska, is the governing body of the Lambrecht Cemetery Association of Pierce County, Nebraska, a Nebraska Cemetery Association formed pursuant to Neb. Rev. Stat. §19-201 et. seq., and which is the legal owner of the Lambrecht Cemetery located in Willow Creek Township, Pierce County, Nebraska, and,

WHEREAS, Neb. Rev. Stat. §50-503 provides a procedure for the Board of Trustees of a Cemetery Association to reclaim unoccupied burial spaces in a Cemetery governed by an Association for which there has been no burial for more than twenty (20) years; and,

WHEREAS, five (5) Legal Notices as to the unoccupied Burial Spaces in the Lambrecht Cemetery for which there are records, now existing or which may have existed in the past but which no longer can be found, indicating that these unoccupied Burial Spaces in the Lambrecht Cemetery were at one time owned, respectively, by various individuals, were published respectively for four (4) consecutive weeks in the Pierce County Leader Newspaper and in the Plainview News, newspapers of general circulation in Pierce County, Nebraska, and,

WHEREAS, the Certification of Shirley A. Hoffman, Clerk of the Board of Trustees of Lambrecht Cemetery Association of Pierce County, Nebraska, as to said Legal Notices and their publications, is attached hereto and incorporated herein by reference and attached to said Certification are the aforesaid Legal Notices.

NOW, THEREFORE, BE IT RESOLVED by the Board of Trustees of Lambrecht Cemetery Association of Pierce County, Nebraska, as follows:

1. The findings here and above made should be and are hereby incorporated herein by reference.

2. That the following Burial Space(s) in the Lambrecht Cemetery are hereby reclaimed by Lambrecht Cemetery Association of Pierce County, Nebraska, to wit:

See Exhibit A attached hereto and incorporated herein by reference.

3. That hereafter, the Board of Trustees of Lambrecht Cemetery Association of Pierce County, Nebraska, may sell said Burial Space in the Lambrecht Cemetery and convey the right of interest therein.

4. That though it is statutorily required that a verified copy of this Resolution, together with proof of publications of the required Legal Notices, be filed in the office of the Pierce County Clerk/Registrar of Deeds, the Pierce County Clerk/Registrar of Deeds has no ability to record and index said Resolution and said office does not contain any record books for recording and indexing Cemetery Deeds for any of the counties located in Pierce County, Nebraska. Therefore, the aforesaid statutory requirement is hereby waived.

DATE: August 18, 2019.

LAMBRECHT CEMETERY ASSOCIATION
OF PIERCE COUNTY, NEBRASKA

By: Shirley A. Hoffman
Clerk of the Board of Trustees

“spoken for” but
“unused” burial
spaces in the
Lambrecht
Cemetery as
being reclaimed
by the
Lambrecht
Cemetery
Association and
available for
sale.

LAMBRECHT CEMETERY
RECLAIMED BURIAL SPACES

August 18, 2019

BLOCK	BURIAL SPACES RECLAIMED/AVAILABLE
1	A1-6; B1; B3-8; C3-4; C7-8; D1-8
2	A1-8; B1-5; B7-8; C3-6; C8; D5-8
3	A1-8; B1-4; B6-8; C3-8; D2; D4-8
4	A1-8; C1-5; C7-8; D1-8
5	A1-8; B1-8; C1-8; D1-6
6	A1-8; B2-8; C4-8; D5-8
7	A2-4; B1-4; B7-8; C2-8; D1-8
8	A1-8; B2-4; B6-8; C1; C6-8; D1-8
9	A2-4; A6-8; B1-8; C1-8; D3-4; D6-8
10	A1-3; A5-7; B1-7; C1-8; D2; D5-7
11	C1-2; C4; C6; D4-8
12	A5-6; B3-5; D1-4; D8
13	B1; D1; D8
14	A1-4; A6; B1-4; C1-3; C7-8; D-1
15	A1-8; B1-8; C2-8; D4-8
16	A8; B1; B3; B8; C1-8; D1-5
17	A2-4; A8; B1-8; C1; C3-5; D1-8
18	A1; B1-8; C1-3; C6-8; D1-8
19	A2-3; B1-8; C1-2; D1; D3-4; D5-8
20	A1-3; A5-7; B2; B5-8; C1-5; C7-8; D2-4; D5-8
21	A1-3; A5-8; B1-8; C5-8; D5-8
22	A2-4; A6; B1-6; C1-4; C7-8; D2-8
23	A1-5; B1-8; C7-8; D7-8
24	A1-6; A8; B1-5; B7-8; C1-6; C8; D1-8
25	A1-2; A4-8; B1-2; B4-8; C1-2; C4-8; D1-2; D4-8



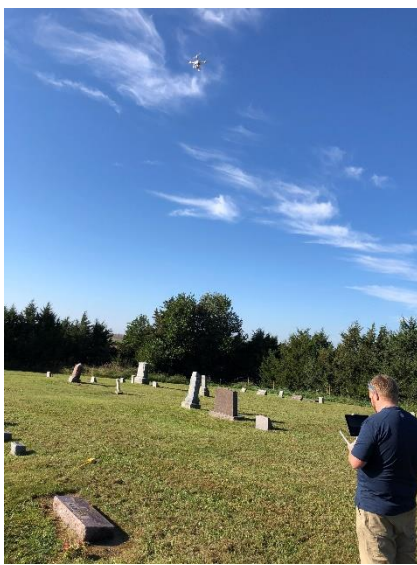


Another concern of the members of the Lambrecht Cemetery Association was the location of unmarked graves. Unmarked graves could be as the result of there never being a headstone or tombstone for the deceased's burial site or if there had been a wooden or temporary marker, it had deteriorated and been lost over time. The names on the Bishop plat and the Voecks plats indicating locations of burial sites were

reviewed and compared with the physical evidence of a burial site, such as a marker of some permanency, in the Lambrecht Cemetery were reviewed. That review determined that there were unmarked graves in the Lambrecht Cemetery. The question was how to verify that there were burials in those alleged unmarked graves.



Exhumations were not feasible. The next best process would be the non-scientific but fairly common practice of “witching” the Lambrecht Cemetery for unmarked graves. Enter Judy Carlson of nearby Wausa, Nebraska. Judy has a long history of interest in cemeteries in northeast Nebraska and has a reputation of being able to locate unmarked graves by the use of two copper wires. Judy was contacted to “witch” the Lambrecht Cemetery for unmarked graves and a date and time was determined. Judy walked and “witched” the Lambrecht Cemetery on September 3, 2018. Unmarked graves were located. Several, in Block 25, Potter’s Field, were discovered in locations other than as indicated on the Bishop and Voecks plats. Judy can also determine by lifting one copper rod above her head while standing on or close to a grave the age and sex of an infant burial. Sex is determined by the rotation of the rod, either to the left or to the right, and the age by the number of full rotations of the rod.



Another project of the Lambrecht Cemetery Association was also undertaken in the fall of 2018. This project was to determine the locations of tombstones in relation to their supposed burial



space. JEO's survey work produced GPS coordinates for the Lambrecht Cemetery. Now a drone could be employed to take aerial photos of the Lambrecht Cemetery. Those photos could then be superimposed over the location of each Block in the Lambrecht Cemetery, with the burial spaces drawn in, and the location of each tombstone would be shown relative to its burial space. The result is an aerial photo of each Block showing the tombstones on that Block and their location in relation to the burial spaces. "Witching" will then determine, such as in the Block 4 photo, if the burials were to the front or to the back of the tombstones.

The next large capital improvement project for the members of the Lambrecht Cemetery Association would be to enhance the appearance of the Lambrecht Cemetery by addressing the issues of tombstones needing cleaning and of straightening tilting and leaning tombstones. This project would be known as the Tombstone Restoration Project for which there is a special section of this website.